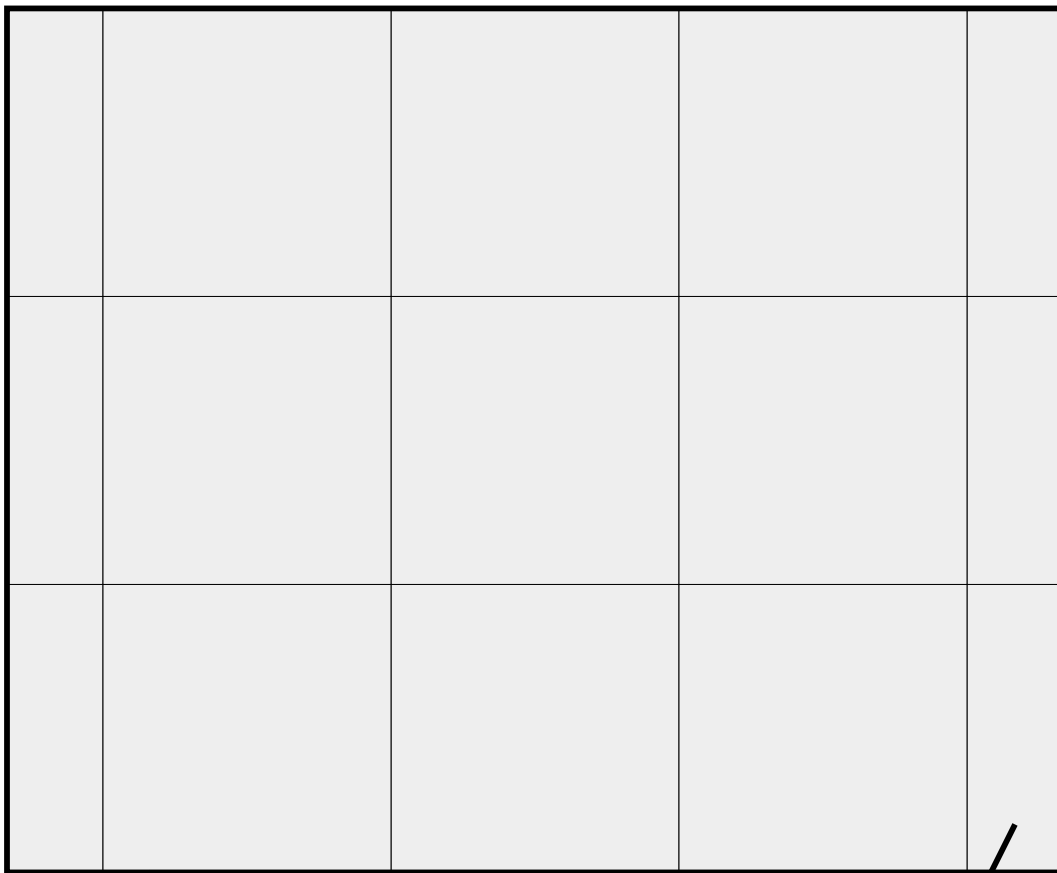


Ship Corridor Floor Masks

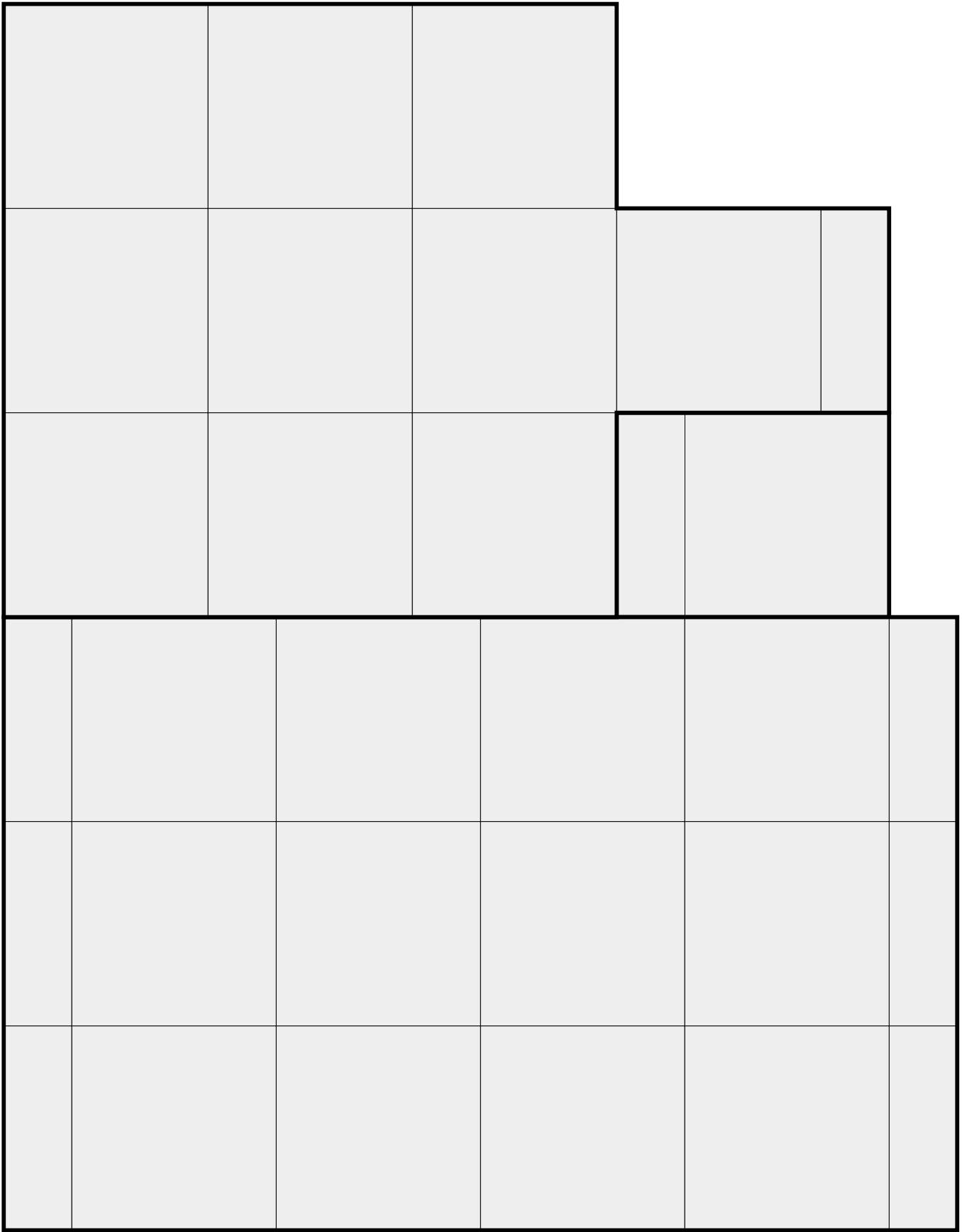
To use these:

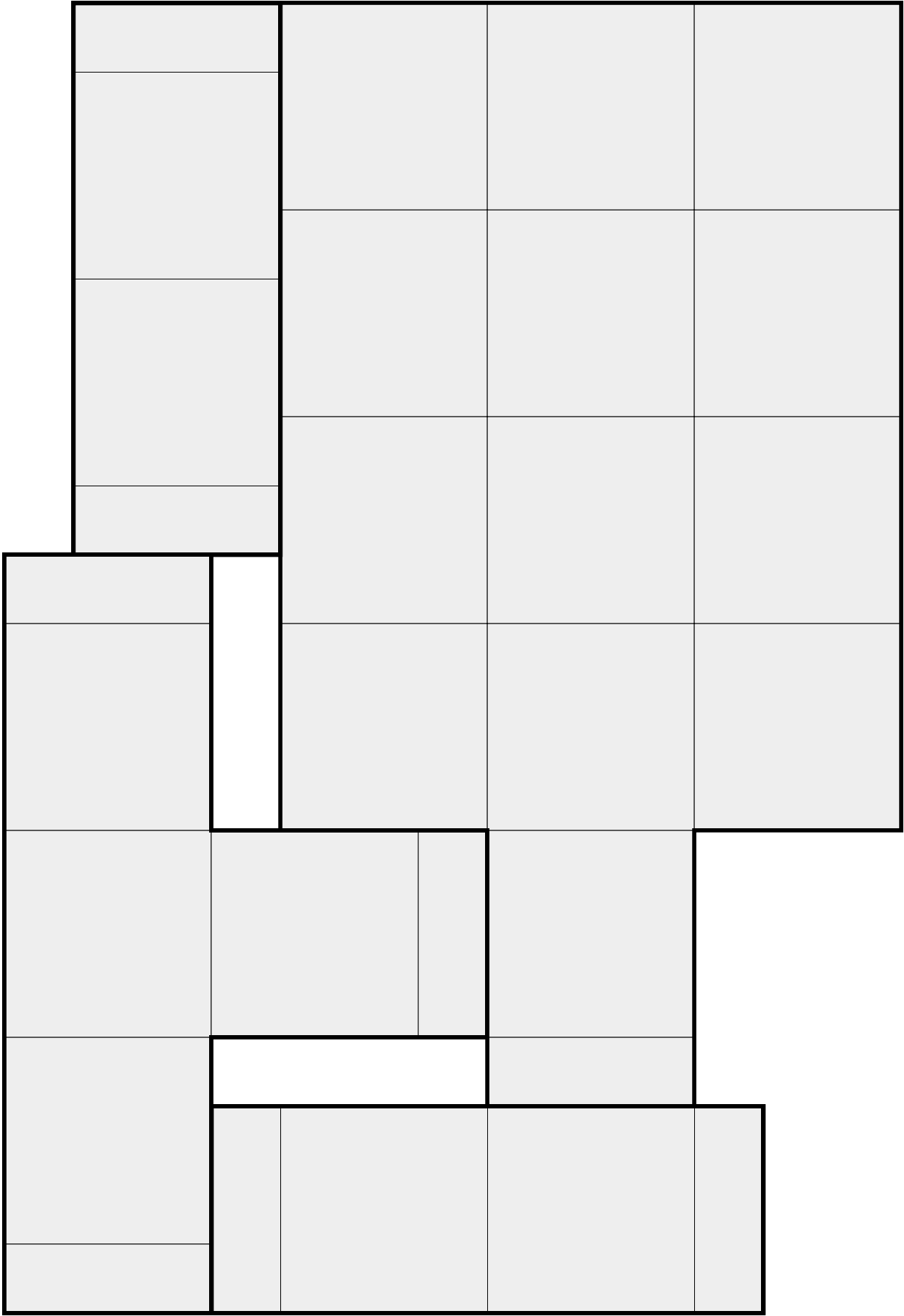
1. Cut along thick black lines only.
2. Place temporary double stick tape on back.
3. Fold short tabs down.
4. Place covering floor.
5. Dry brush outside edges of your piece.
6. Pull off and reuse on next section.

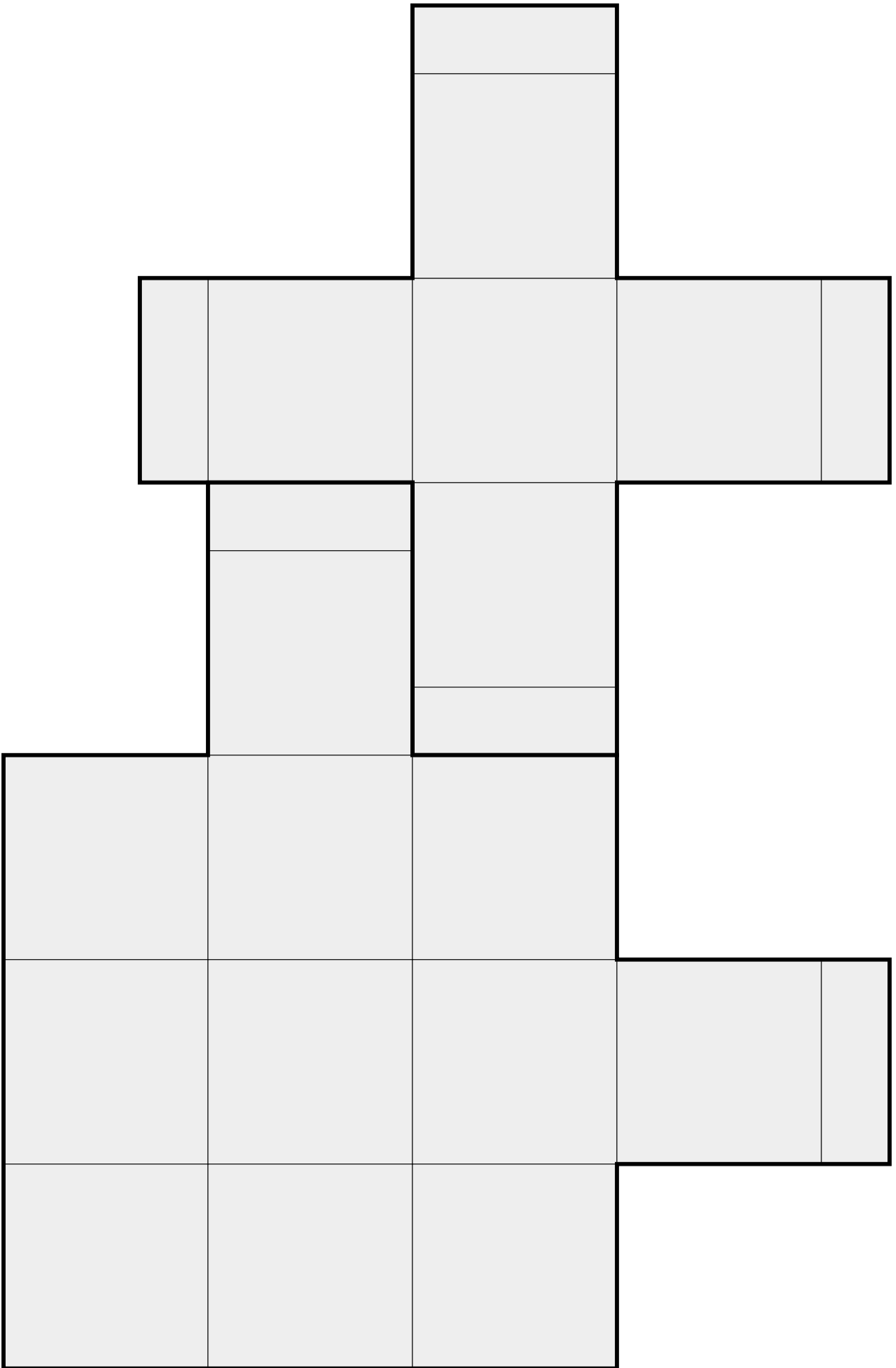


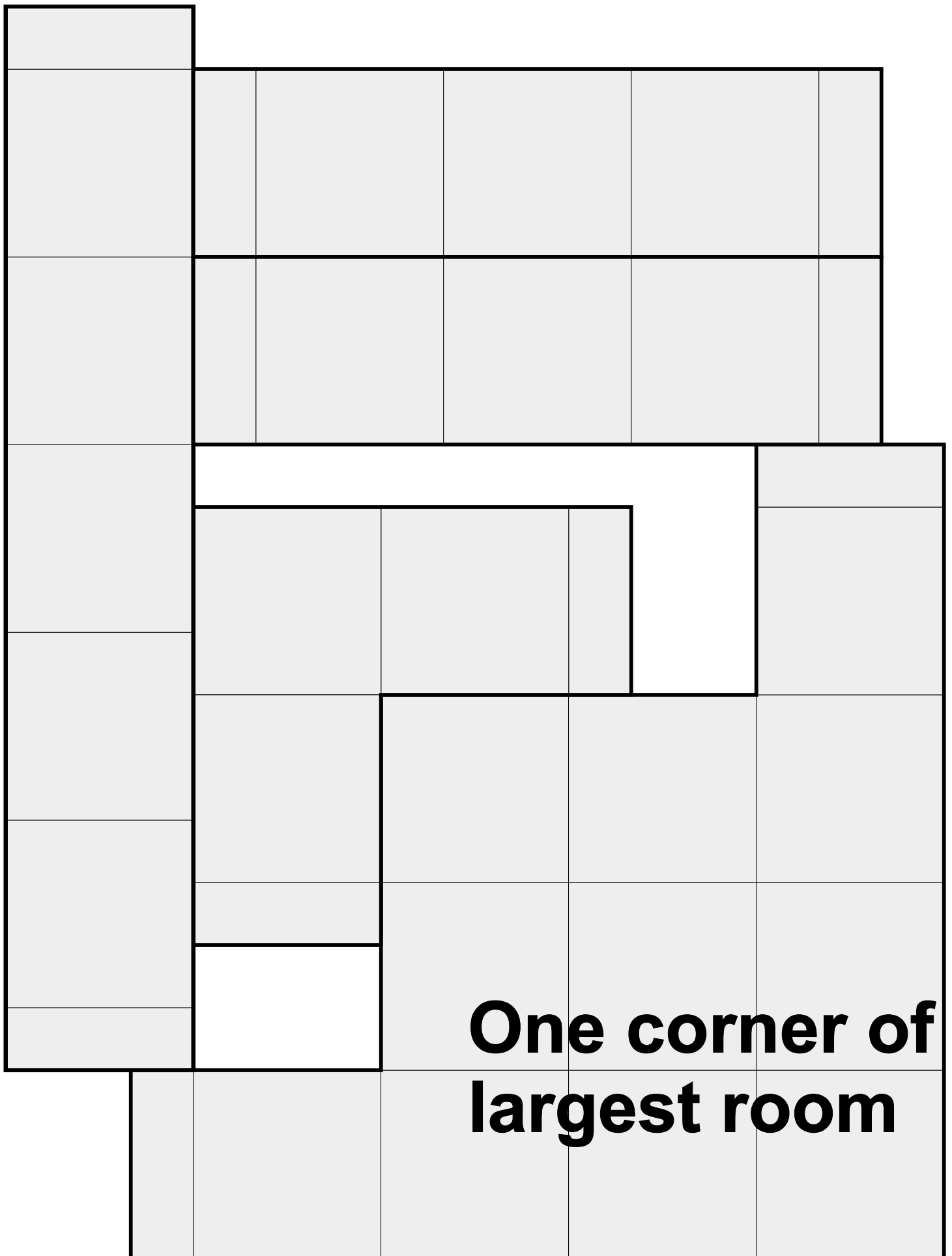
Cut on thick black lines only.

Fold short tabs down

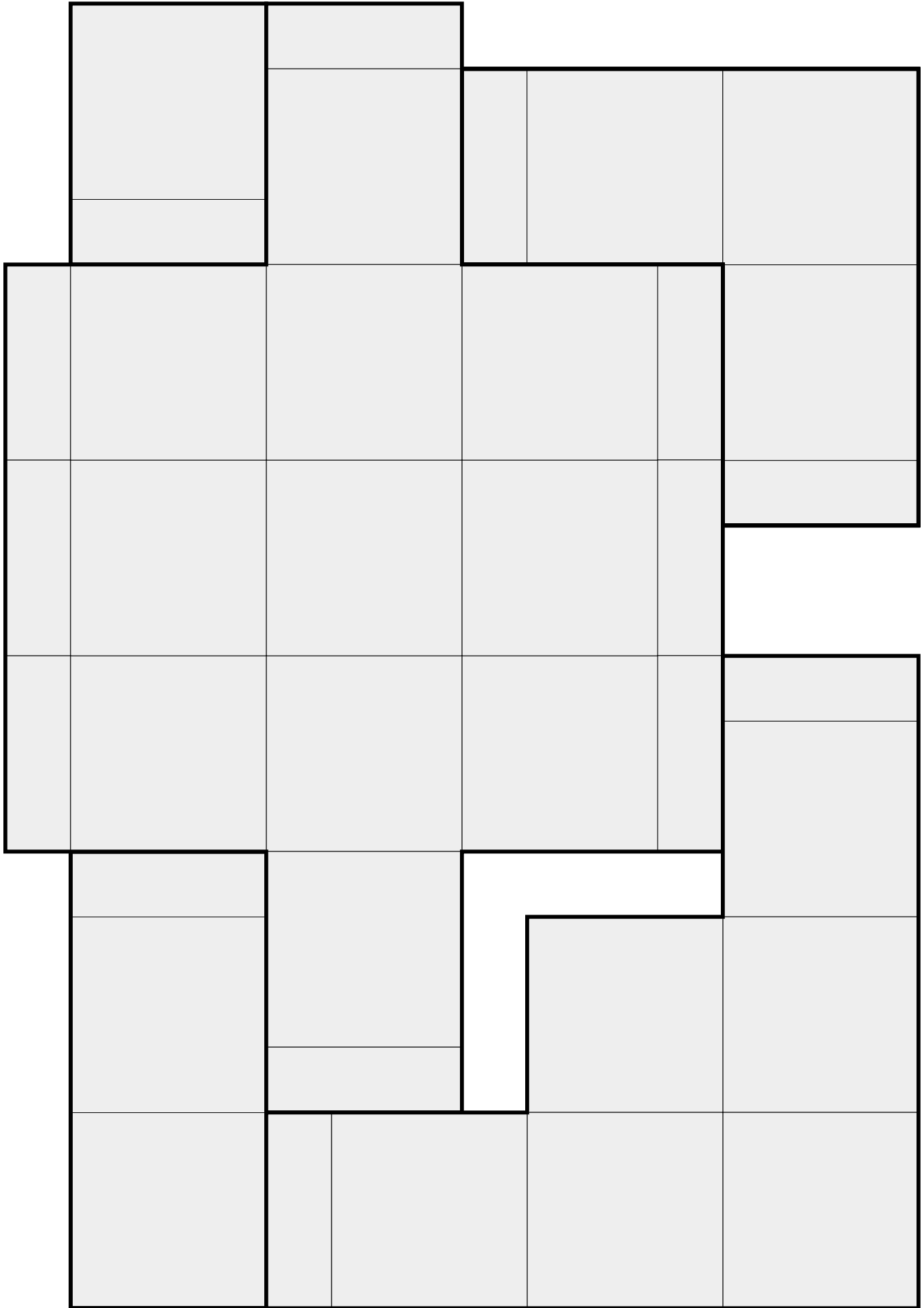


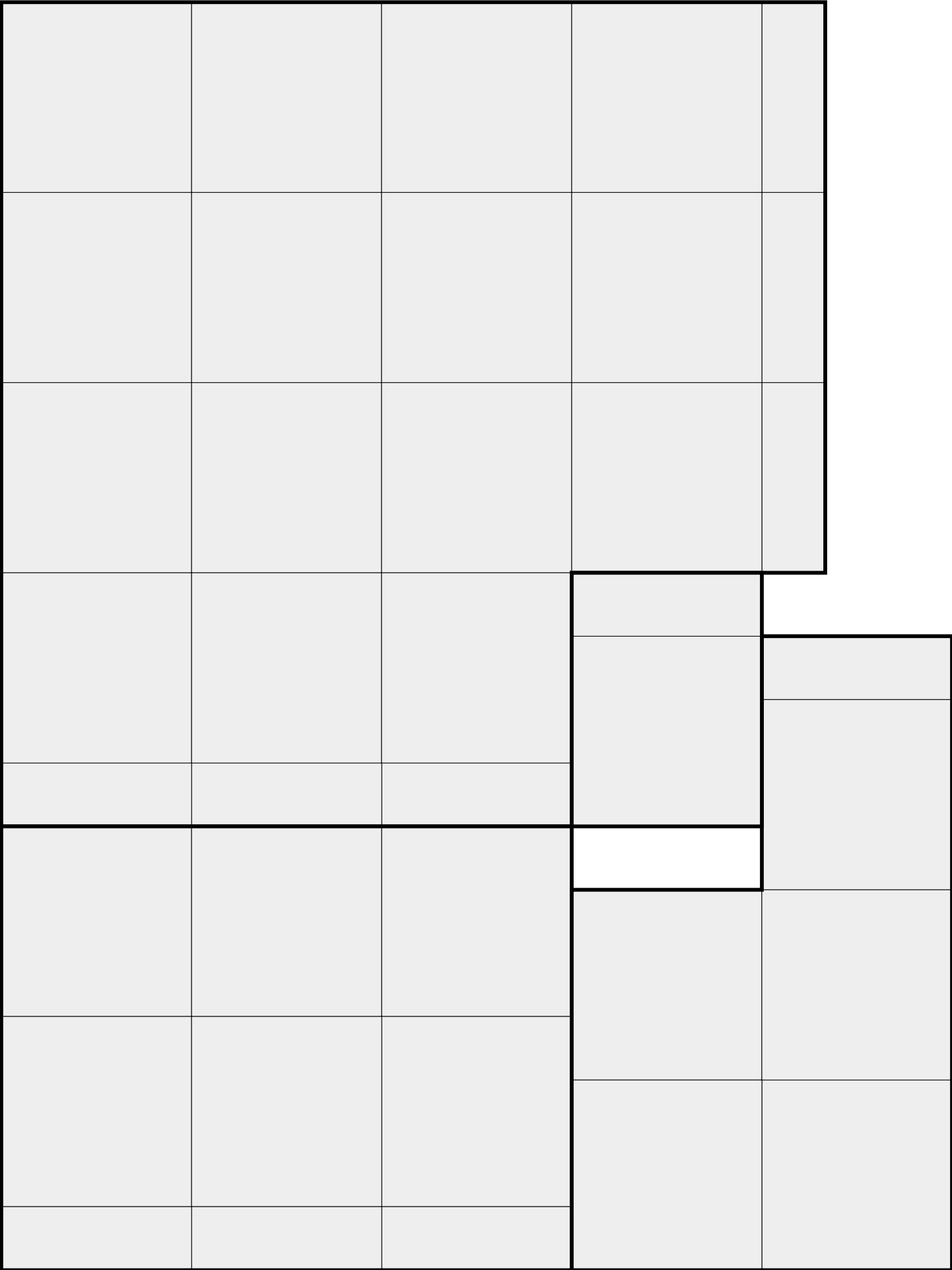


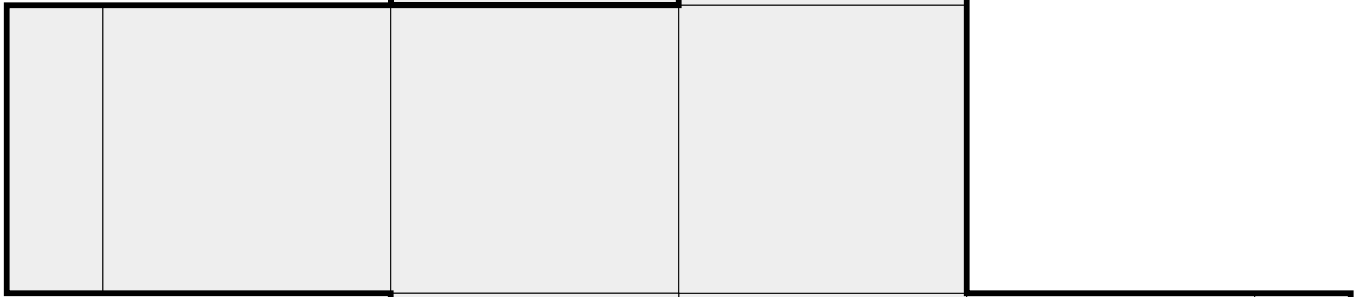
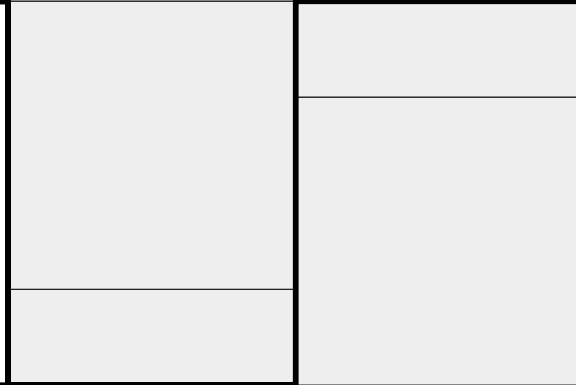


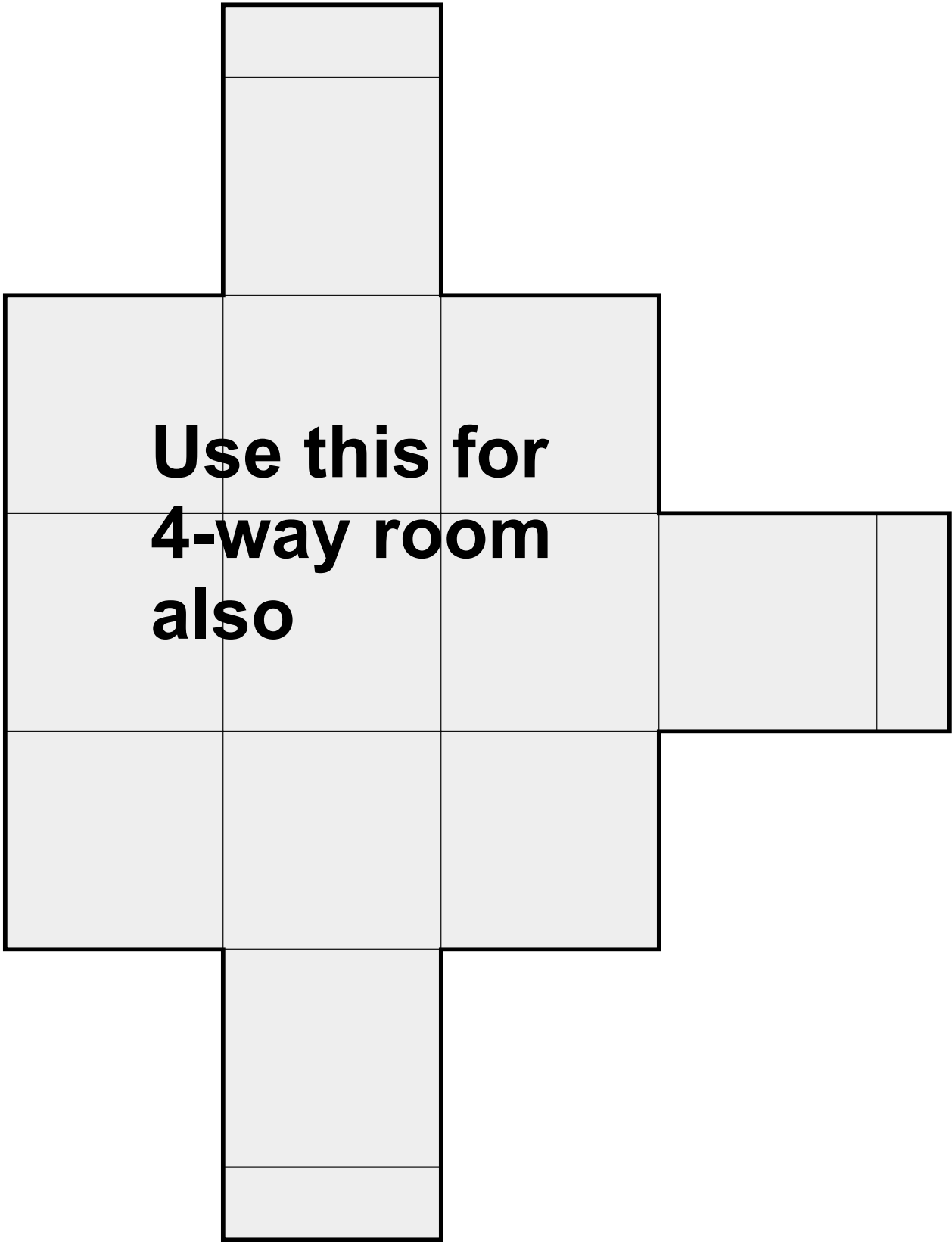


**One corner of
largest room**









**Use this for
4-way room
also**

